

# **CMOS Box Internet Camera**

**ICA-120**

**Quick Installation Guide**

# Table of Contents

Chapter 1. Introduction .....	3
1.1 Before Installation.....	3
1.2 System Requirements for Viewer.....	3
Chapter 2. ICA-120.....	4
2.1 Package Content.....	4
2.2 Physical Description.....	4
2.2.1 Front View .....	4
2.2.2 Rear View .....	5
2.2.3 Installation Steps.....	6
Chapter 3. IP Wizard Installation and Operation .....	7
3.1 IP Wizard Installation .....	7
3.2 Wizard function .....	10
3.3 Username and Password .....	11
Chapter 4. Cam Viewer Installation .....	13
Appendix A: Feature Listing for Cam Viewer .....	17
Appendix B: Suggest Hardware / System Requirement .....	18
Ordering Information for Cam Viewer Pro .....	19
Further Configuration .....	19

---

## Chapter 1. Introduction

Thank you for purchasing the internet camera. It is versatile and high image resolution of the perfect surveillance application. The internet camera state-of-art design is considerable to fit in various network environments.

### 1.1 Before Installation

Before installation, please be sure to read this quick installation guide and user's manual (CD) carefully to complete machine installation.

### 1.2 System Requirements for Viewer

Network Interface	10/100MBase-TX Ethernet
Monitoring System	Recommended for Internet Explorer 6.0 or later
System Hardware	<ul style="list-style-type: none"><li>· CPU: Pentium 4, 1.5GHz or above</li><li>· Memory Size: 512 MB (512 MB or above Recommended)</li><li>· VGA card resolution: 1024 x 768 or above</li><li>· Sound Card: Necessary</li><li>· <b>Network bandwidth: In VGA resolution mode, minimum upload bandwidth is 1Mbps.</b></li></ul>

## Chapter 2. ICA-120

### 2.1 Package Content

ICA-120 x 1

Power Adapter x 1

Camera Mount Kit x 1

CD Disk x 1

Quick Installation Guide x 1

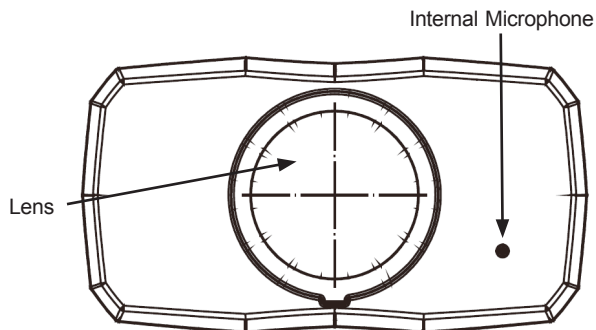


#### Note

1. If any of the above items are missing, please contact your dealer immediately.
2. Using a power supply with a different voltage than the one included with the ICA-120 will cause damage and void the warranty for ICA-120.

### 2.2 Physical Description

#### 2.2.1 Front View



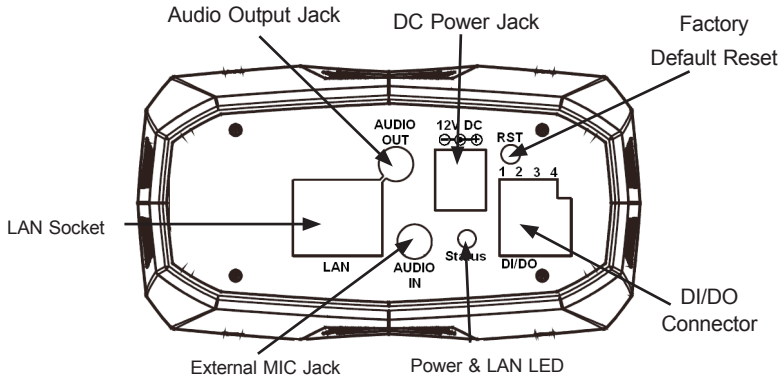
#### Lens

User could adjust the focus to get the best picture quality.

#### Internal Microphone

The Camera has built-in an internal microphone. This microphone is hidden in the pinhole located on the front panel

## 2.2.2 Rear View



### Audio Output Jack

Audio-out Jack allows this device to output audio for two-way communication or alerting sound.

### DC Power Jack

The input power is 12VDC.



Only use the power adapter supplied with ICA-120. Otherwise, the product may be damaged.

### LAN Socket

The LAN socket is a RJ-45 connector for connections to 10Base-T Ethernet or 100Base-TX Fast Ethernet cabling. This Ethernet port built N-Way protocol can detect or negotiate the transmission speed of the network automatically. Please use Category 5 "straight through" cable to connect the Network Camera to a 100Mbps Fast Ethernet network switch or hub.



In case you need to connect the device to PC or notebook directly, you should use "cross-over" cable instead.

### Factory Default Reset

This button is hidden in the pinhole. Please refer to the Appendix A in this manual for more information.

## **Power & LAN LED (green color)**

This LED is used to indicate whether DC power is on or not. In addition, this LED will be flashing while network accessing via Ethernet.

## **DI/DO Connector**

The Camera provides a terminal block with 4 pins of connectors for DI and DO. Please refer to the Appendix B in this manual for more information.

## **External Microphone**

The Camera also supports external microphone. User can plug in an external microphone to pick up voice more.

### **2.2.3 Installation Steps**

1. Attach the Camera with the included stand
2. Fix camera to desired location with stand
3. Plug an Ethernet cable into the Camera

Connect an Ethernet cable to the LAN socket located on the camera's rear and attach it to the network.

4. Connect the external power supply to Camera

Connect the attached power adapter to the DC power jack of the camera. Note: Use the power adapter, 12VDC, included in the package and connect it to wall outlet for AC power.

Once you have installed the camera well and powered it on, the power LED will turn on. It means the system is booting up successfully. Furthermore, if you have a proper network connection, and access to the camera, the LED will flash green under wired mode.

5. Done

## Chapter 3. IP Wizard Installation and Operation

This chapter shows how to quick set up your internet camera. The internet camera is with the default settings. However to help you find the networked camera quickly the windows utility-IP Wizard can search the cameras in the network that shall help you to configure some basic setting before you started advanced management and monitoring.

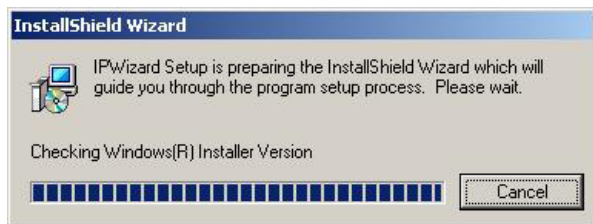
### 3.1 IP Wizard Installation

1. Insert the bundled CD into the CD-ROM drive to launch the autorun program. Once completed, a welcome menu screen will appear.
2. Click the "IP Wizard Utility" hyperlink; you will see the InstallShield Wizard dialog box as below.



Note

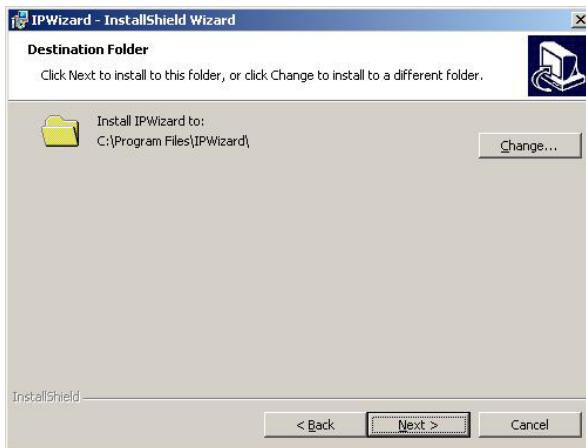
If the welcome screen does not appear, click "Start" at the taskbar. Then, select "Run" and type "D:\Utility\setup.exe", assume D is your CD-ROM drive.



3. The "Welcome to the InstallShield Wizard for IPWizard" will display on the screen and click "Next" to continue.

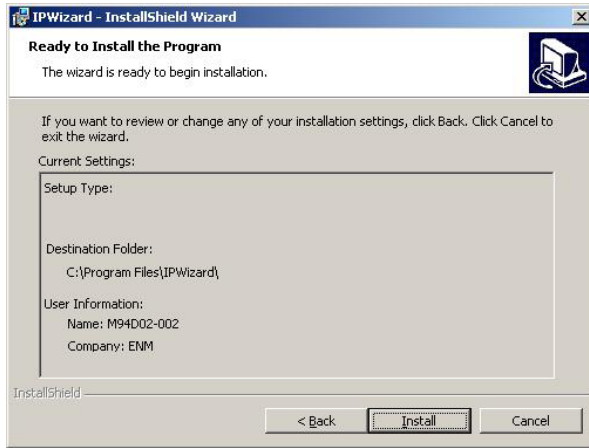


4. Please click "Next" to install with original settings, or you may click "Change..." button to modify the install folder then press "Next" to continue.

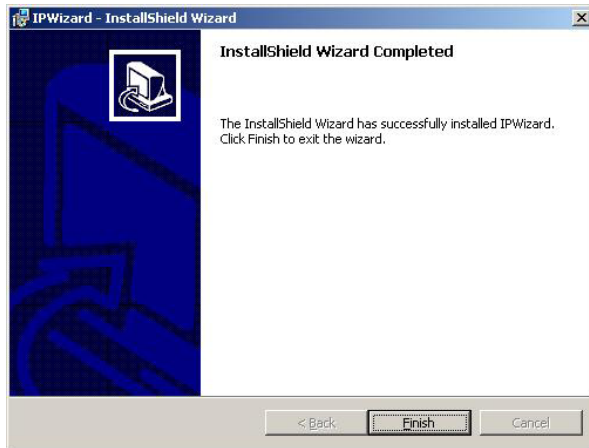




5. Please click "Install" to start the installation.

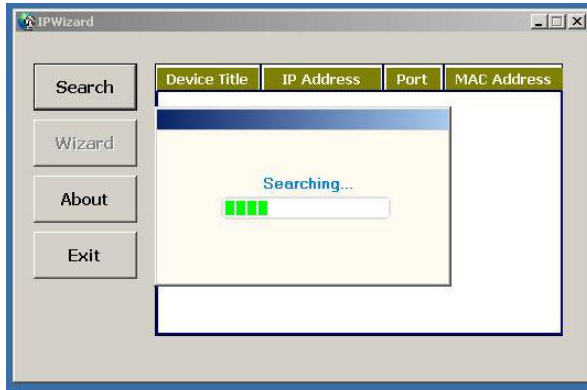


6. Please click "Finish" to complete the installation



7. Please double-click the utility icon  on the desktop then you will see the utility.

8. Press "Search" button. IP Wizard will list all IP Cameras in your LAN environment:

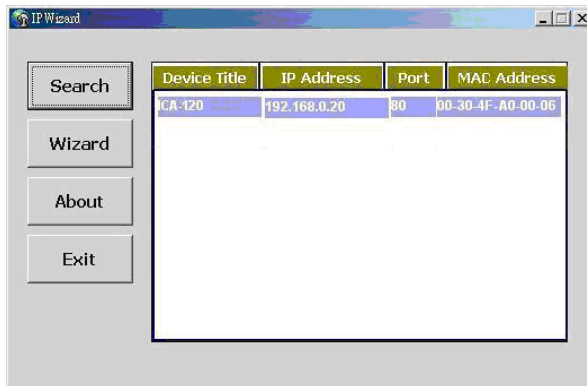


Note

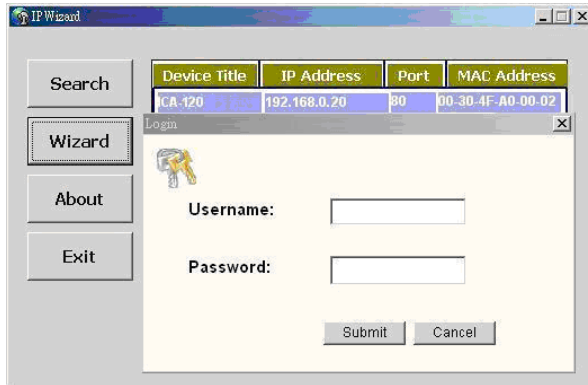
Please connect you camera or video server to PC directly, and use IP Wizard to search IP address of device, when you use device at first time or forget IP address.

### 3.2 Wizard function

Please select your device and press "Wizard". The utility featured of "Wizard" function to help user to initial device. User can setup IP address, username and password step by step.



Please enter User Name and Password. Default Username is: admin, leave password blank. Then click "Submit".

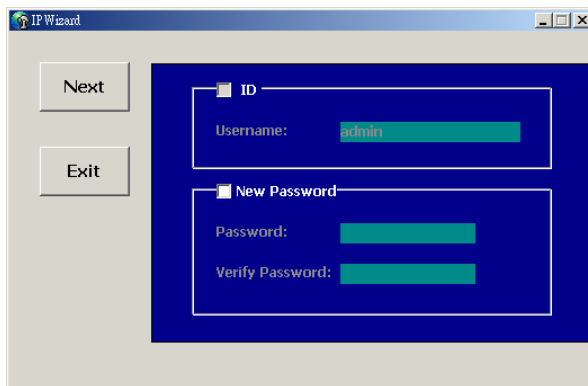


### 3.3 Username and Password

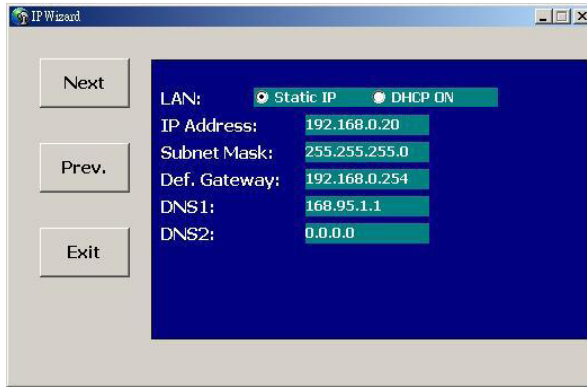
You may change the ID and assign a new password to your device or keep the original and press "Next" to continue.



If you assign new password to your device, please write down and avoid forgetting it.



You can select "Static IP" and enter the IP settings. Or select "DHCP ON" when there is a DHCP server in your network.



Note

If no IP address is assigned after 30 seconds, Internet Camera will use its default address 192.168.0.20.

User may open the web browser, and key in the IP address (for example: <http://192.168.0.20>, the default IP address) in the address field to login web configuration page and refer to the User's manual in the bundled CD disk for more configuration.

## Chapter 4. Cam Viewer Installation



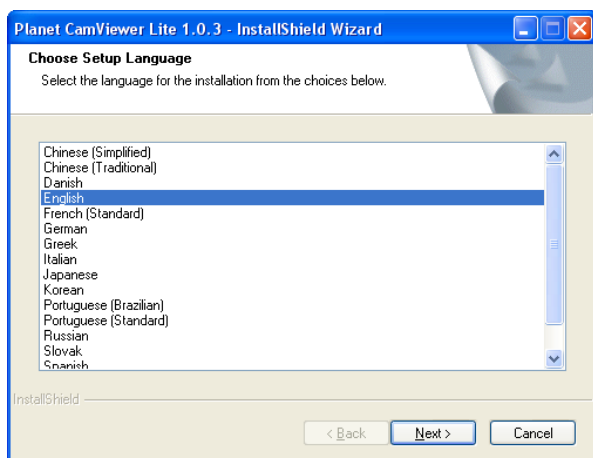
The Cam Viewer Pro 30 days trial version installation steps are similar. Below is the installation of Cam Viewer Lite.

1. Insert the bundled Cam Viewer CD disk into the CD-ROM drive to launch the autorun program. Once completed, a welcome menu screen will appear. Click the "Cam Viewer Lite" hyperlink, the below InstallShield Wizard dialog box will appear.

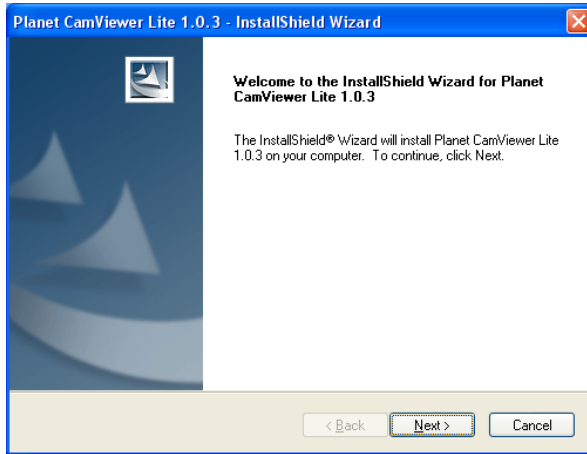


If the welcome screen does not appear, click "Start" at the taskbar. Then, select "Run" and type "D:\Cam Viewer Lite\setup.exe", assume "D" is your CD-ROM drive.

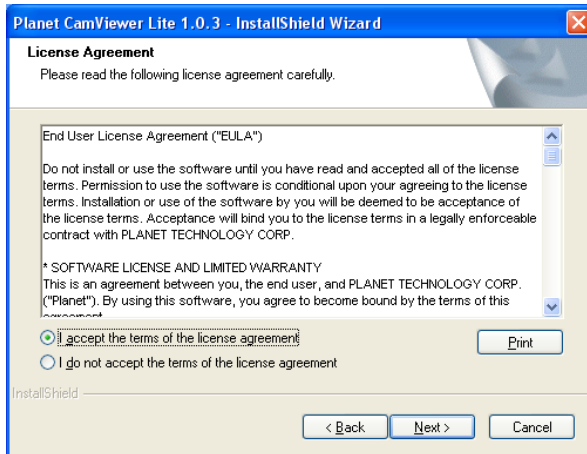
2. Selects the language which you want, Cam Viewer is current including fifteen languages. Please select one of the languages and click "Next" to continue.



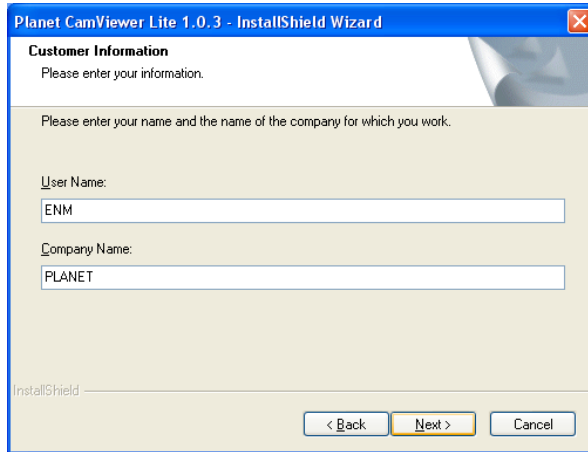
3. The "Welcome to the InstallShield Wizard for Planet Cam Viewer Lite 1.0.3" will display on the screen, please click "Next".



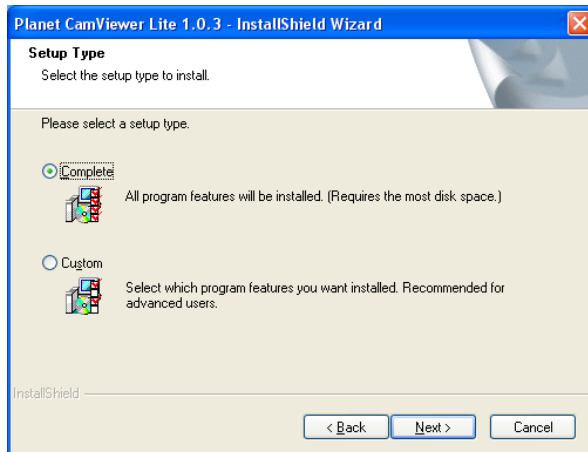
4. Please read the license agreement and then check "I accept the terms of the license agreement" if you are agreed and click "Next" to continue the installation



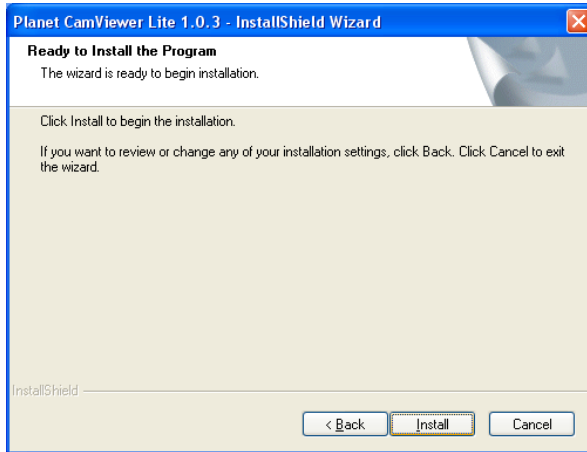
5. Please key in user name and company name for which you want and click "Next" to continue installation.



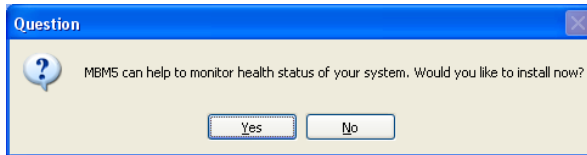
6. Check the option "Complete" – all program features will be installed (Requires the most disk space) and click "Next" to continue installation.



7. "Ready to Install the Program" will appear to prompt you to start the installation. Please click "Install" to start.



8. Please click "No" to finish the Cam Viewer Lite installation.



9. Note: In above step, when Cam Viewer works with MBM5 (Motherboard Monitor 5), Cam Viewer will display CPU temperature and fan speed. Please click "Yes" if you need this function and refer to the manual of Cam Viewer CD disk for complete installation.



## Appendix A: Feature Listing for Cam Viewer

Software Version	Cam Viewer Lite	Cam Viewer Pro
IP Camera Input	32	4 / 8 / 16 / 32 / 64
Dual Monitor	-	√
Smart Guard	-	√
I/O Device	√	√
Hotline	-	√
Address Book	-	√
Log Viewer	Unusual event System log	Unusual event System log Counting application
Counting Application	-	2 way counting
Remote Playback Server	-	Unlimited
Concurrent Playback	1 Channel	16 Channels
Counting Function	-	√
Smart Search	General Motion	General Motion Missing Object Foreign Object Lose Focus Camera Occlusion
Remote Live Viewer	1 Channel	16 Channel

## Appendix B: Suggest Hardware / System Requirement

Total FPS	~600	600~480	480~240	240~120	120~
CPU	Intel Core 2 Duo QX6800	Intel Core 2 Duo E6600	Intel Pentium D 930	Intel P4 3.0 GHz	Intel P4 2.8 GHz
RAM	4 GB	2 GB	2 GB	1 GB	1 GB
Chipset of Motherboard	Intel 946 or 965 chip, Intel Chipset recommended				
VGA Card	ATI Radeon 9200, nVIDIA GeForce FX-5200, Intel 945/965 or above (ATI recommended)				
Ethernet	100 Base-TX or Above, Gigabit LAN recommended				
Hard Disk	160 GB or above				
O.S.	Windows 2000 / XP / 2003				

Total FPS: Means all the cameras will spend how many frames when this software works. Suppose there are 10 cameras, each one will work with 30fps; the total fps should be 300fps.

---

## ***Ordering Information for Cam Viewer Pro***

<b>Model</b>	<b>Description</b>
CVP-4	4-Channel Cam Viewer Professional
CVP-8	8-Channel Cam Viewer Professional
CVP-16	16-Channel Cam Viewer Professional
CVP-32	32-Channel Cam Viewer Professional
CVP-64	64-Channel Cam Viewer Professional

### **Further Configuration**

If you want to configure more detail settings of ICA-120, please refer to the user manual in the CD disk.

This page is intentionally left blank